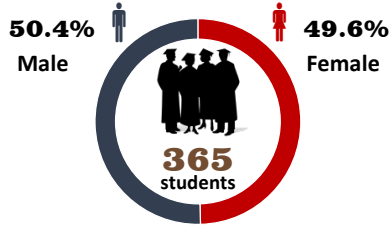
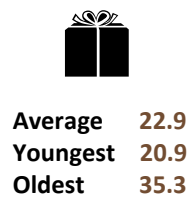


### Gender



### Age



### ACADEMIC PROFILE

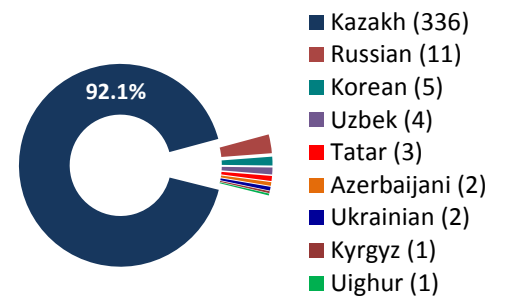
Degrees conferred	365
Graduation rate*	77.8%
Average graduation GPA	3.26
School of Engineering	3.42
School of Humanities and Social Sciences	3.20
School of Science and Technology	3.18
Median graduation GPA	3.33
Average degree credits earned (ECTS)	263.1

\*Graduation Rate is the % of students who started their undergraduate program in Fall 2011 and completed it in Spring 2015. Original entry cohort in Fall 2011 was 469.

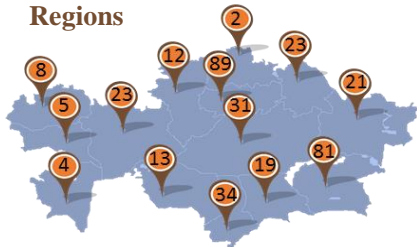
### DEGREES AWARDED WITH HONORS

<b>Distinction</b> (4.00 GPA)	1
<b>Summa Cum Laude</b> (top 1% standing in their School)	5
<b>Magna Cum Laude</b> (top 3% standing in their School)	14

### Ethnicity

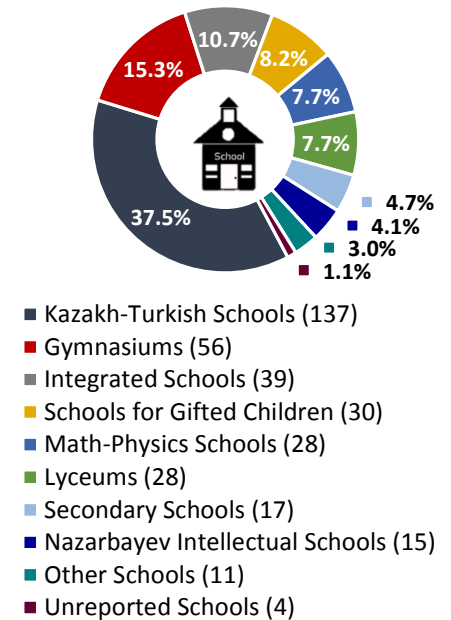


### Regions

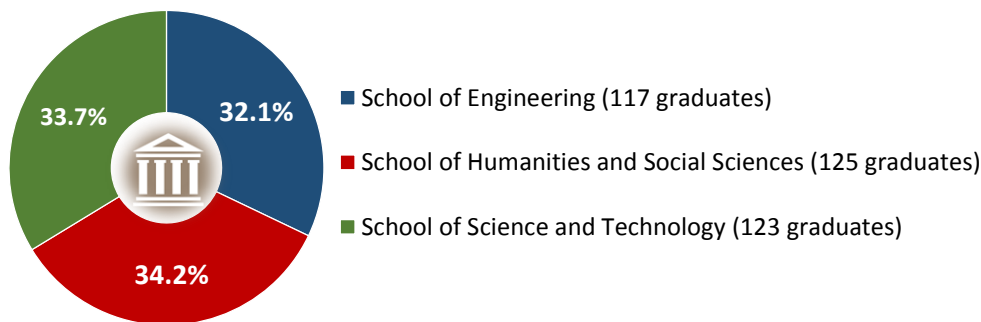


Regions	Counts	%
Astana and Akmola region	89	24.4
Almaty and Almaty region	81	22.2
South Kazakhstan	34	9.3
Karaganda	31	8.5
Aktobe	23	6.3
Pavlodar	23	6.3
East Kazakhstan	21	5.7
Zhambyl	19	5.2
Kyzylorda	13	3.6
Kostanay	12	3.3
West Kazakhstan	8	2.2
Atyrau	5	1.4
Mangistau	4	1.1
North Kazakhstan	2	0.5
<b>Total</b>	<b>365</b>	<b>100</b>

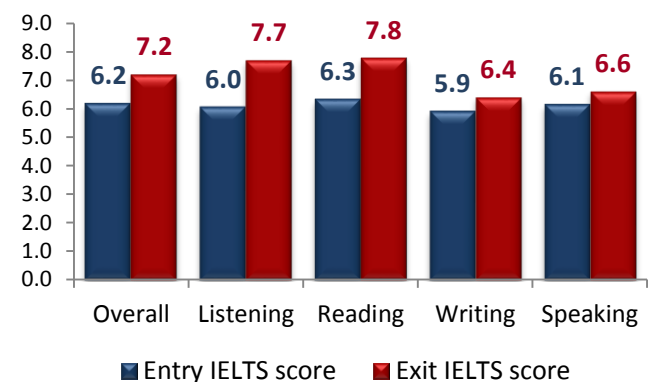
### Types of secondary schools attended



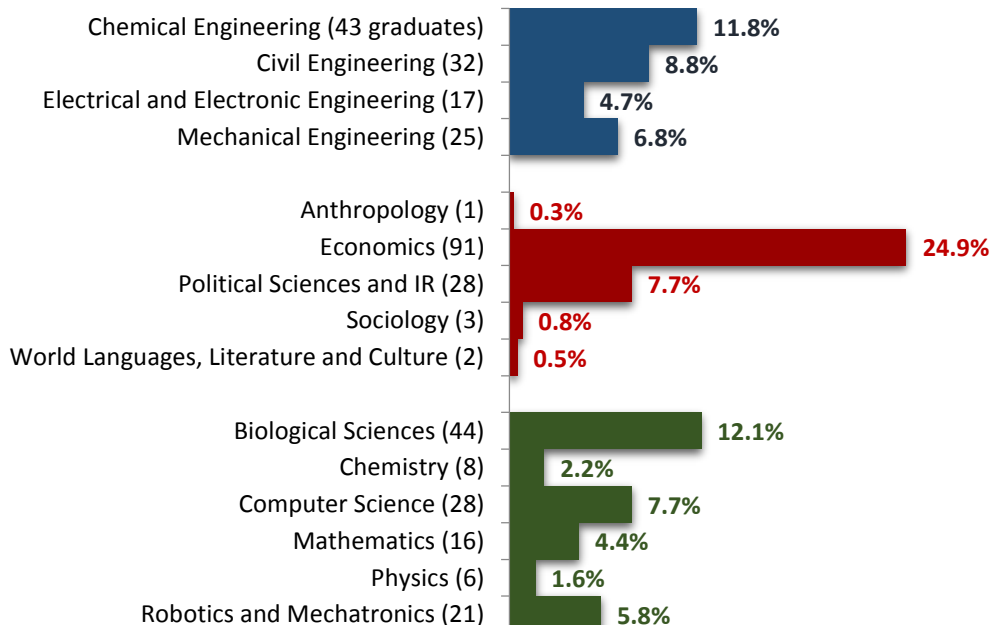
### Number of graduates by School



### Average IELTS scores



### Number of graduates by major



**Note:** Average Entry IELTS scores were based on 360 graduates who had taken the IELTS at the point of admission to NU Foundation Year Program (Fall 2010). Average Exit IELTS scores were based on 276 graduates who took the Exit IELTS test in Fall 2014.